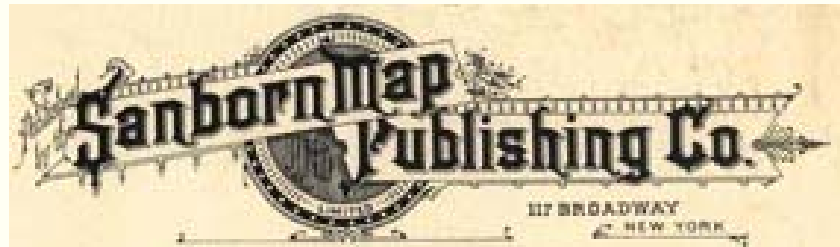


Digitizing Fire Insurance Maps: The Library of Congress Experience



Colleen R. Cahill, Library of Congress

Julie Sweetkind-Singer, Stanford University

Paul Rascoe, University of Texas at Austin

April 24, 2007

82 Eveleigh's.....D.^o

83 Vanderhorsts.....D.^o

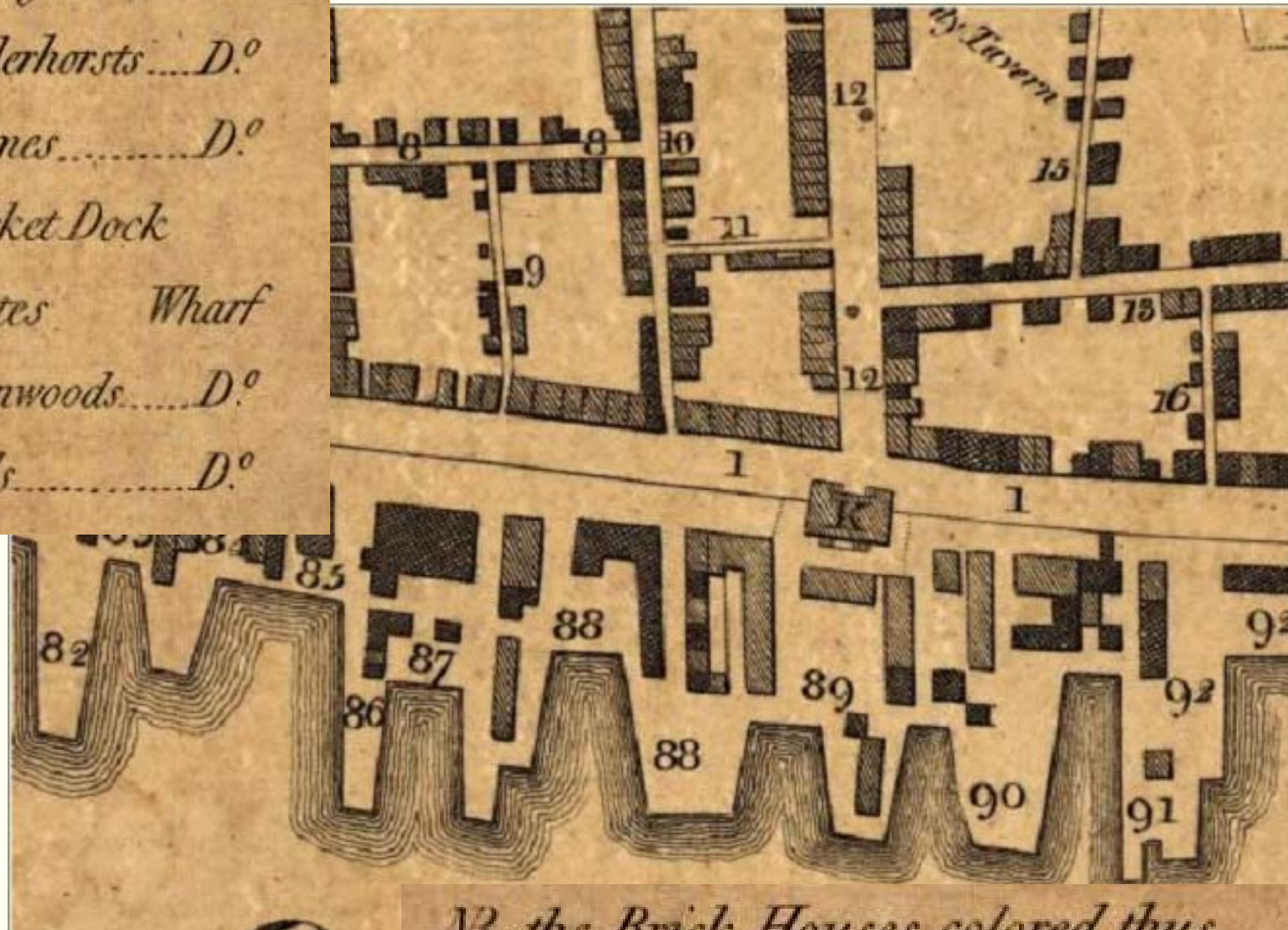
84 Grames.....D.^o

85 Market Dock

86 Mottes Wharf

87 Greenwoods.....D.^o

88 Beals.....D.^o



NB: the Brick Houses colored thus

the Wood D.^o D.^o

Petrie, 1788

<http://hdl.loc.gov/loc.gmd/g3914c.ct000423>



THE GREAT FIRE OF THE CITY OF NEW-YORK, 16 DECEMBER 1835.

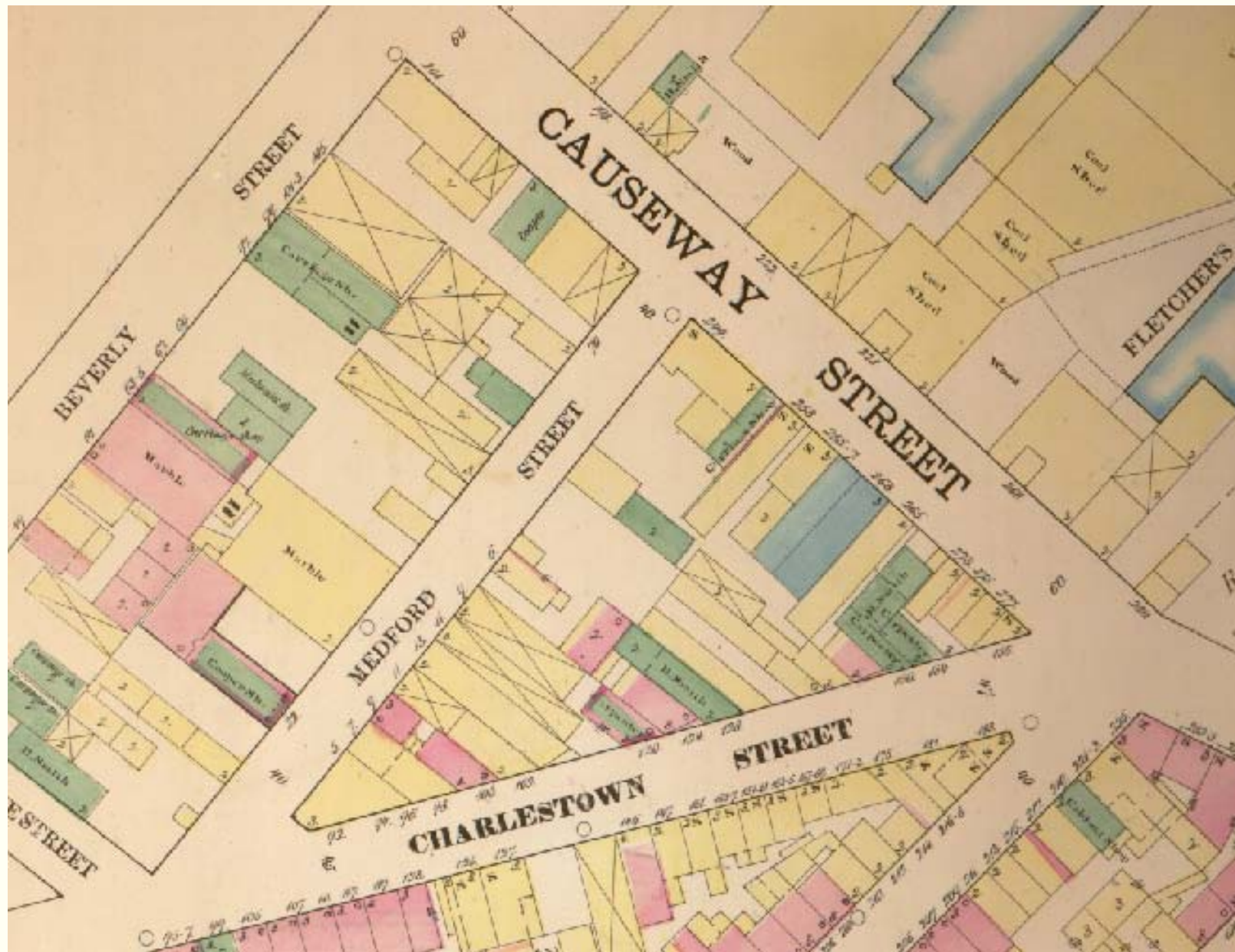
Entered according to act of Congress in the Year 1836 by H. N. Robinson, in the Clerk's Office of the District Court of the Southern District of New York.
Published January 1836, by the Proprietor H. N. Robinson, 148 Courtland Street, New-York.

<http://hdl.loc.gov/loc.pnp/cph.3a06226>



D. A. Sanborn, founder of Sanborn Maps





Boston, 1867 – First Sanborn maps

KEY

TILE 1ST
BRICK 1ST
PYROBAR 1ST

Fire proof construction.
(OR FIRE RESISTIVE CONST'N)

ADOBE

Adobe building.

HEIGHT OF BUILDING IN
FEET FROM GROUND
TO ROOF LINE.

Stone building.

(C. BR)

Concrete, lime, cinder or
cement brick

(C. B.)

Hollow concrete or cement block const'n

(CONC.)

Concrete or reinforced concrete const'n

(TILE)

Tile building.

NUMBER OF STORIES 4

Brick building with frame cornice.

TWO STORIES AND BSMT 2B
COMPOSITION ROOF

" " " stone front.
" " " frame side.
(DIVIDED BY FRAME PARTITION)

SHINGLE ROOF X

(VEND)

Brick veneered building.

BRICK 1ST

" and frame building.

FRAME, BRICK LINED

Frame building, brick lined.

F=FLAT S=STORE

" " metal clad.

D=DWELLING

Frame building.

A IN B AUTO IN B'SMT

Iron building.

LOFT

Tenant building occupied by
various manufacturing or occupancies

(ASB. CL.)


Frame building covered with asbestos

NON COMBUSTIBLE ROOF
COVERING OF METAL,
SLATE, TILE OR
ASBESTOS SHINGLES

Brick building with brick or metal cornice.

DWELLINGS.



 Framed air-shafts are shown but *colored over*. Brick air-shafts are left white.

CLASSIFICATION OF BUILDINGS

Shown by varying number of dots or circles. Classed by New York Board of Fire Underwriters as follows:

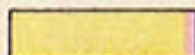


BRICK

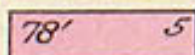
1st Class (.) Slate or metal roof, coped walls.
2nd " (..) " " walls not coped.
3rd " (...) Shingle roof.

FRAME

1st Class (.) Slate or metal roof.
2nd " (..) Shingle roof.



Frame Buildings with BRICK FRONTS.



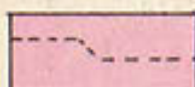
Height of Buildings, in Stories and feet (74 ft. 6 in. and over).



Fronts of marble or other stone.



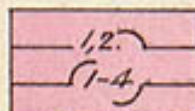
Iron Fronts.



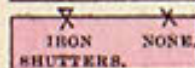
"Dotted line." Interior brick wall, omitted on one or more floors.



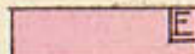
Superior construction. { Built of non-inflammable material "**throughout**," except flooring and trim.



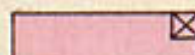
Communications protected by single fire-proof doors { With designation of floors.
" " double " " }



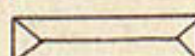
Openings exposing Buildings.



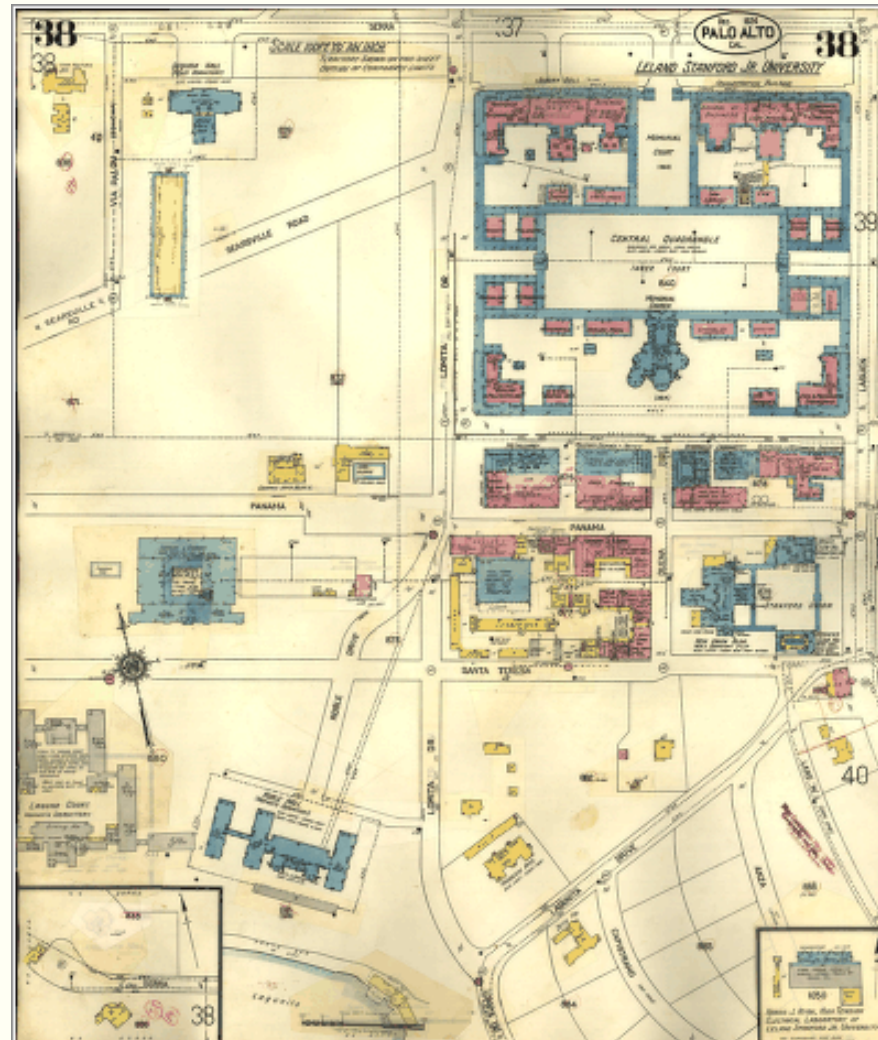
Elevators with steam or other power. { Where enclosed with Brick or Fire-proof material a **heavy line** is drawn around them.



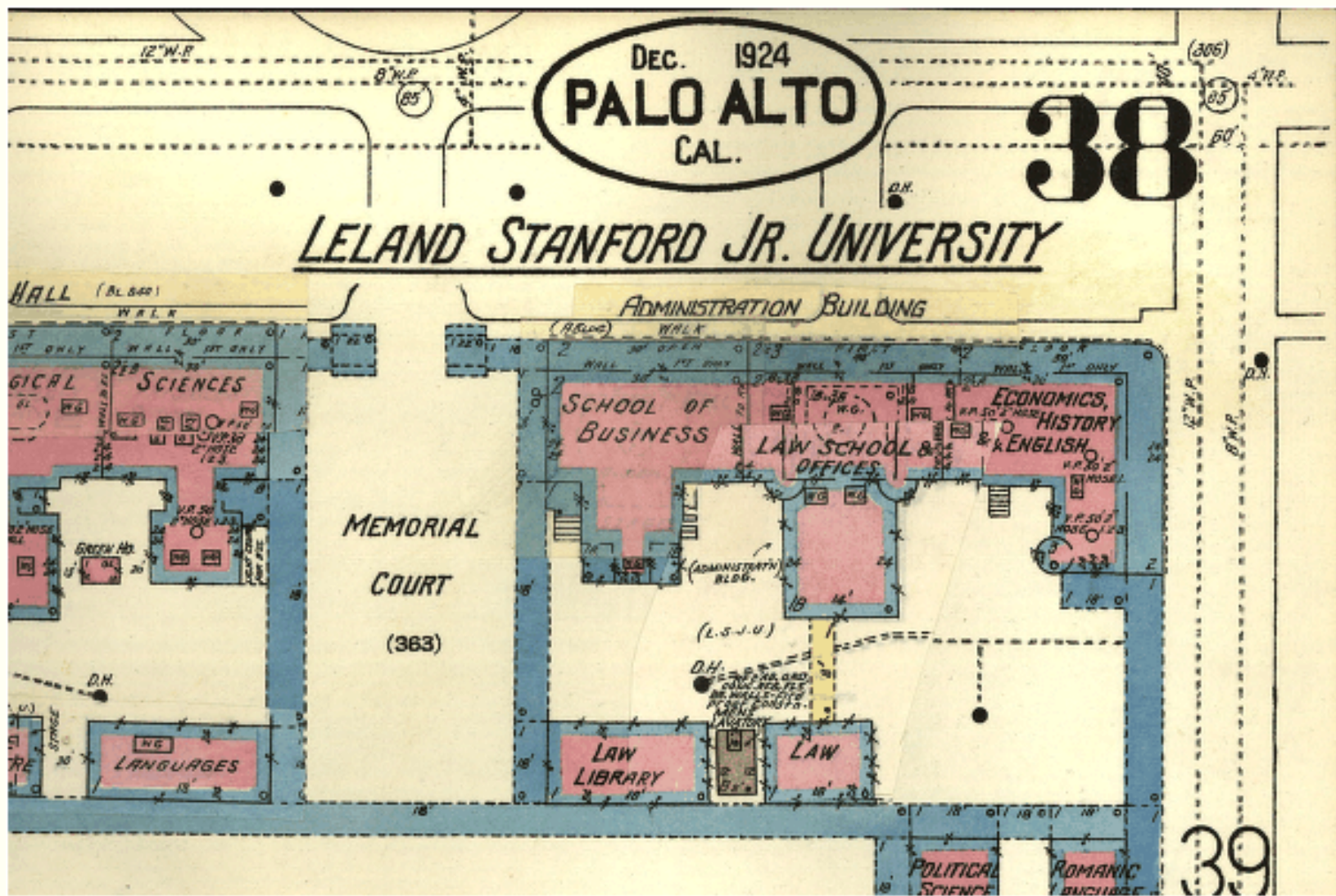
Hatchways or "Dumb-waiters."



Sky-lights in Roof only.



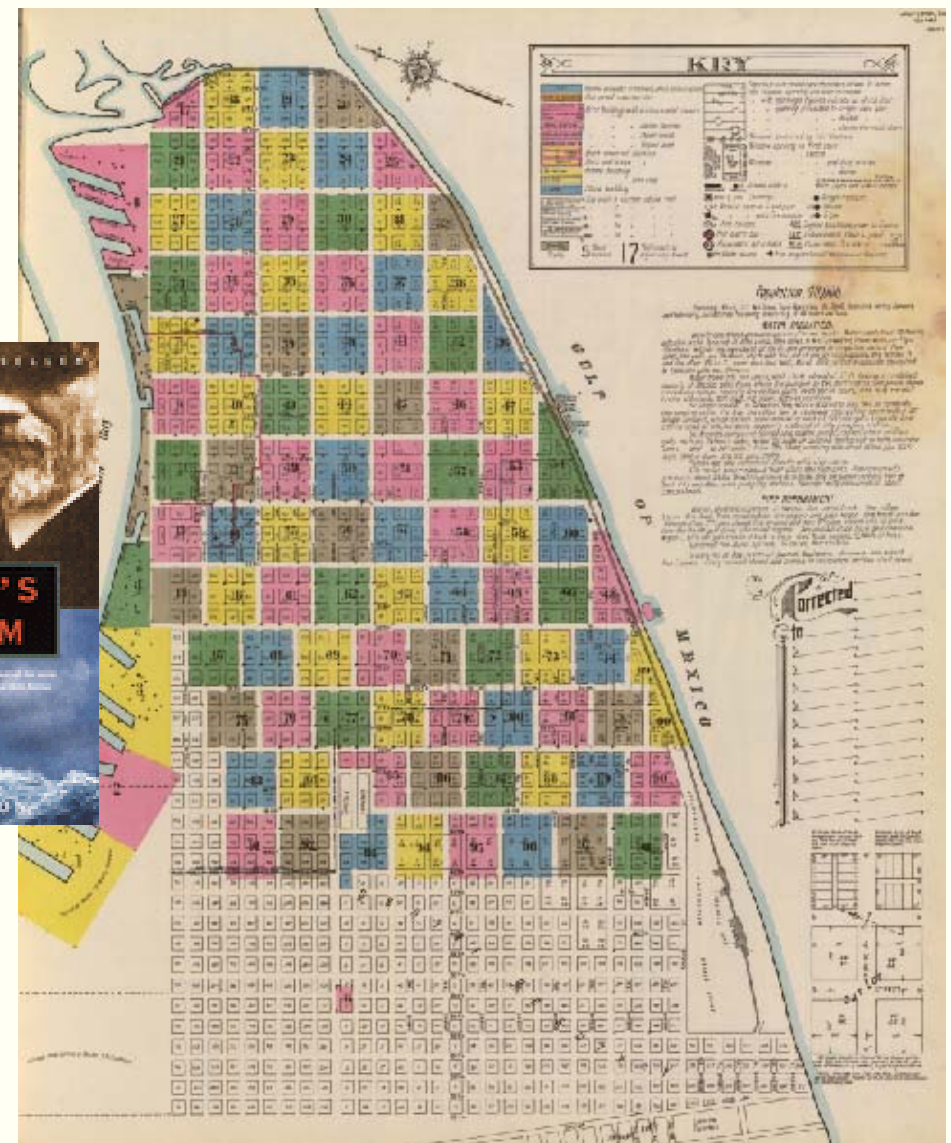
Sanborn Map, Stanford University, 1924



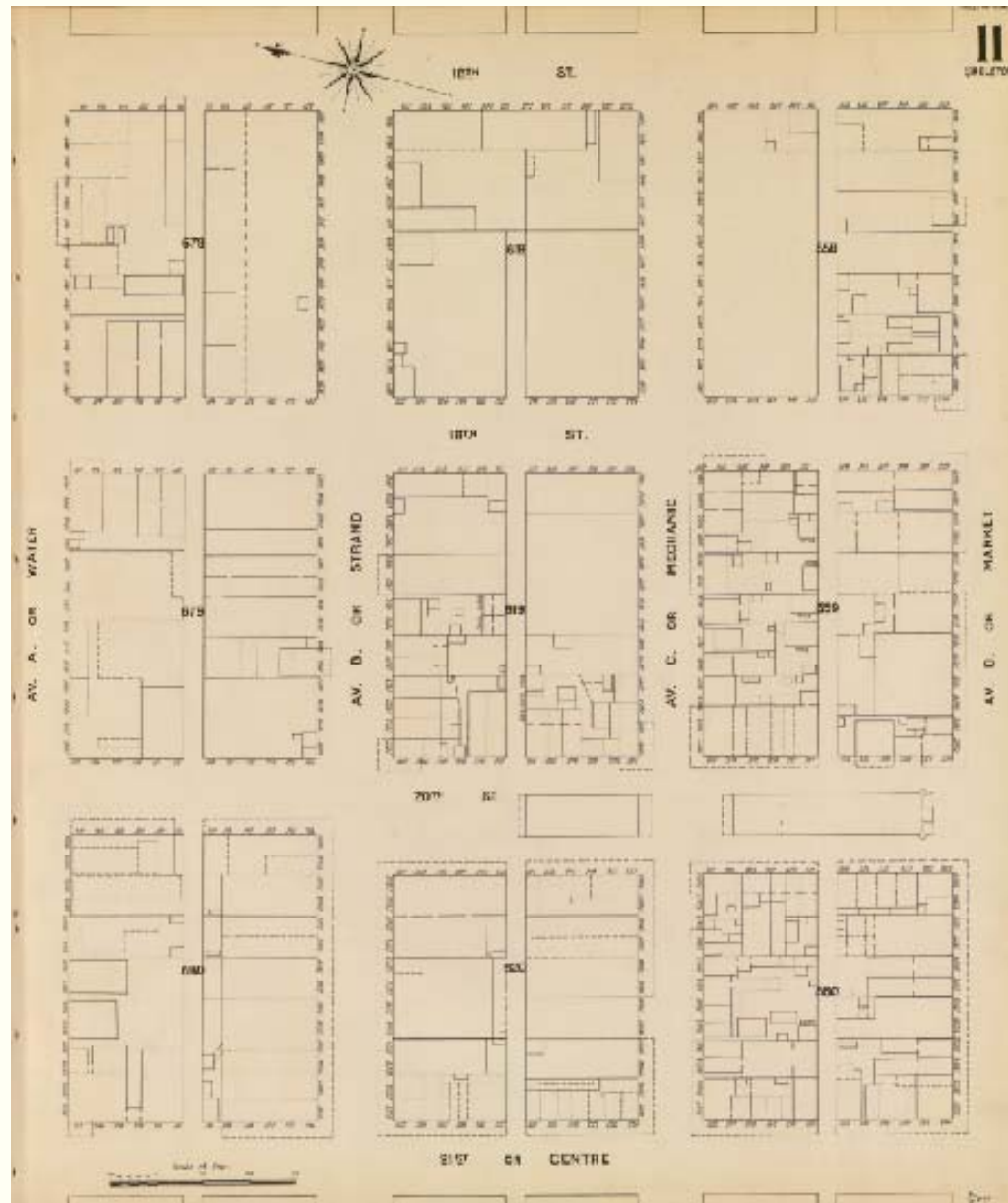
Sanborn Map, Stanford University, 1924



Galveston, Texas, 1899

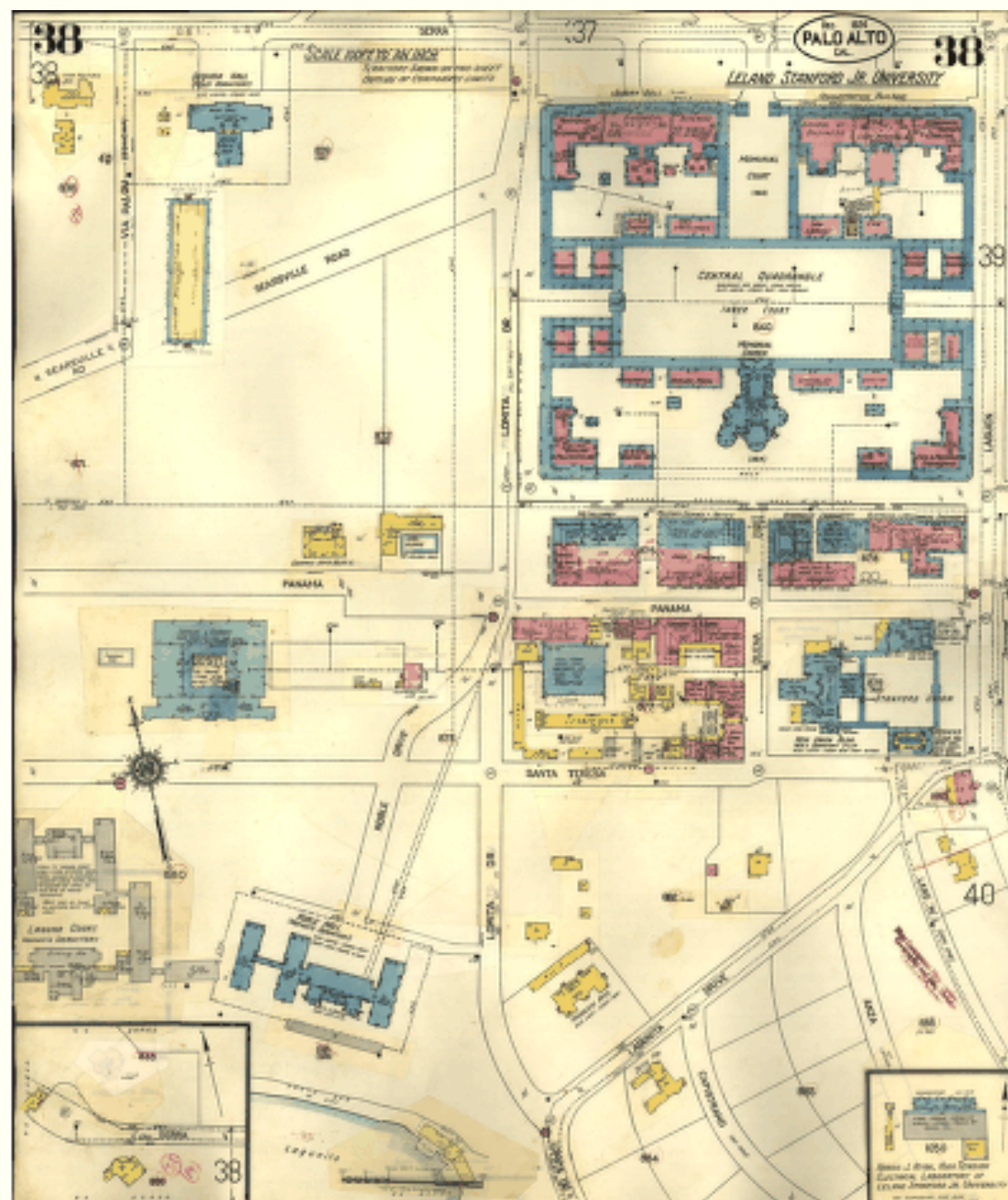


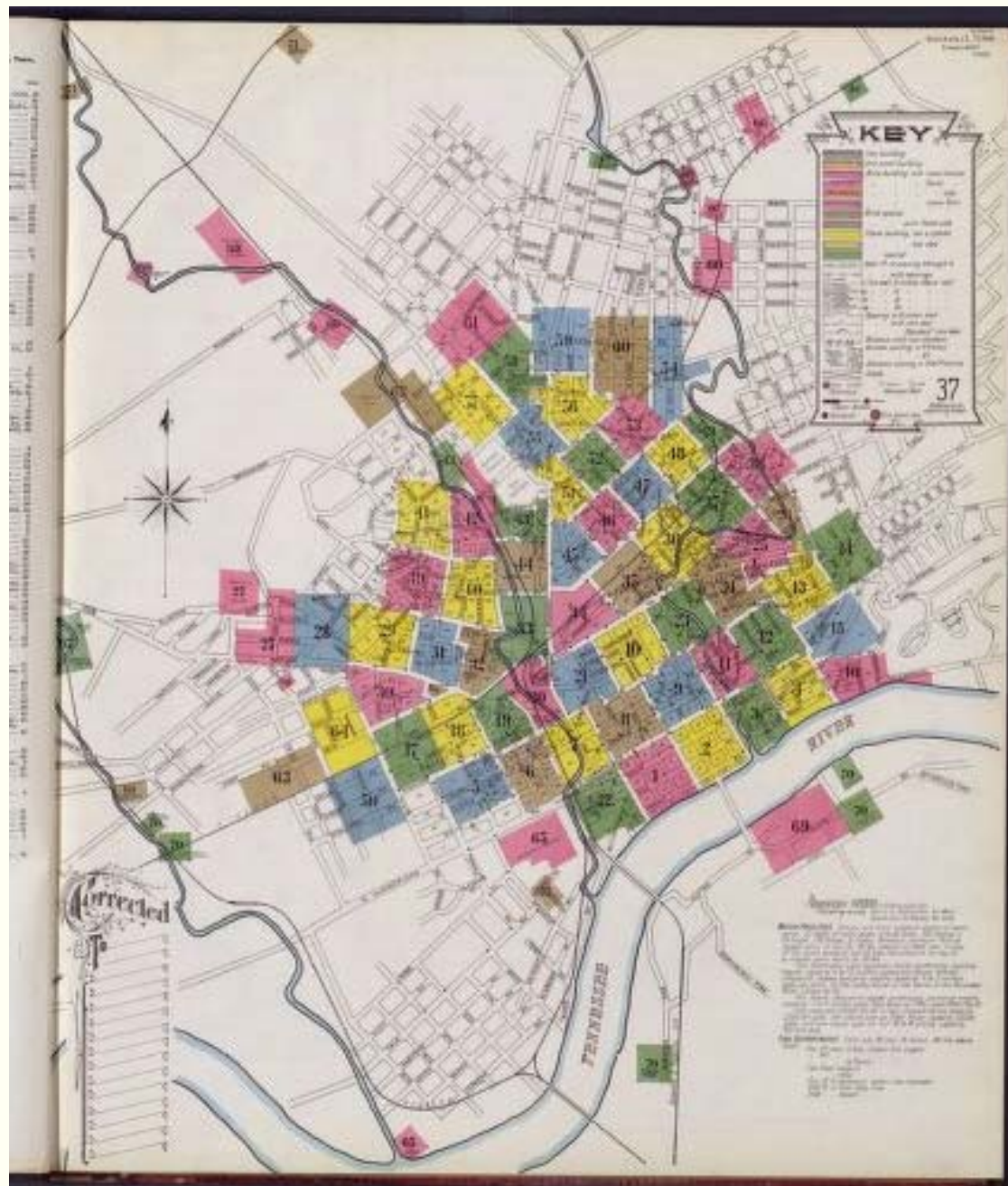
Galveston, Texas, 1912



Galveston, Texas 1899 skeleton sheet







Sanborn Fire Insurance Maps

Browse the Index by State

Search by Keywords

Search for in

This collection...

Start search the database

Sanborn Fire Insurance Maps

You searched for palo alto in Full Text

State	City	County	Maps
California	Palo Alto	Santa Clara County	[Display Holdings]
Iowa	Emmetsburg	Palo Alto County	[Display Holdings]
Iowa	Graettinger	Palo Alto County	[Display Holdings]
Iowa	Ruthven	Palo Alto County	[Display Holdings]
Pennsylvania	Pottsville	Schuylkill County	[Display Holdings]

Search for Palo Alto in Full Text

Dates	# of Sheets	Other geographic areas included:	Comments	URL
Aug 1895	3			Not available online.
Jun 1897	3			Not available online.
Aug 1901	14			Not available online.
Jun 1904	17			Not available online.
May 1908	23			Not available online.
Dec 1924	41	Stanford Univ.		Not available online.
Dec 1924- Dec 1949	41	Stanford Univ.	529	Not available online.

Holdings displayed for Palo Alto California

Sanborn Fire Insurance Maps

Fire Insurance Maps of Texas

Cities of Texas

[Abernathy](#)

[Alba](#)

[Alice](#)

[Alto](#)

[Alvin](#)

[Amarillo](#)

[Angleton](#)

[Aransas Pass](#)

[Arlington](#)

[Asherton](#)

[Athens](#)

[Abilene](#)

[Albany](#)

[Alpine](#)

[Alvarado](#)

[Alvord](#)

[Andrews](#)

[Anson](#)

[Archer City](#)

[Arp](#)

[Aspermont](#)

[Atlanta](#)

Search by state

Sanborn Fire Insurance Maps

You searched for 1883 in Dates

State	City	County	Maps
Colorado	Boulder	Boulder County	[Display Holdings]
Colorado	Breckenridge	Summit County	[Display Holdings]
Colorado	Buena Vista	Chaffee County	[Display Holdings]
Colorado	Canon City	Fremont County	[Display Holdings]
Colorado	Colorado Springs	El Paso County	[Display Holdings]
Colorado	Durango	La Plata County	[Display Holdings]
Colorado	Leadville	Lake County	[Display Holdings]
Colorado	Pueblo	Pueblo County	[Display Holdings]
Colorado	Salida	Chaffee County	[Display Holdings]
Colorado	Silverton	San Juan County	[Display Holdings]
Colorado	Trinidad	Las Animas County	[Display Holdings]
Illinois	Evanston	Cook County	[Display Holdings]

Date search for maps produced in 1883



Fire Insurance Maps in the
Library of Congress. 1981.

[Introduction to the Collection](#)

[Keys, Legends, Symbols](#)

[About the Collection](#)

[How to Interpret Fire Insurance
Maps](#)

[Related Resources](#)

[Sanborn Samplers](#)

[Sanborn Time Series](#)

[FAQ / Help](#)

[Copyright & Restrictions](#)

Two Models for Cooperative Projects



Contribute a Person



Contribute Funding



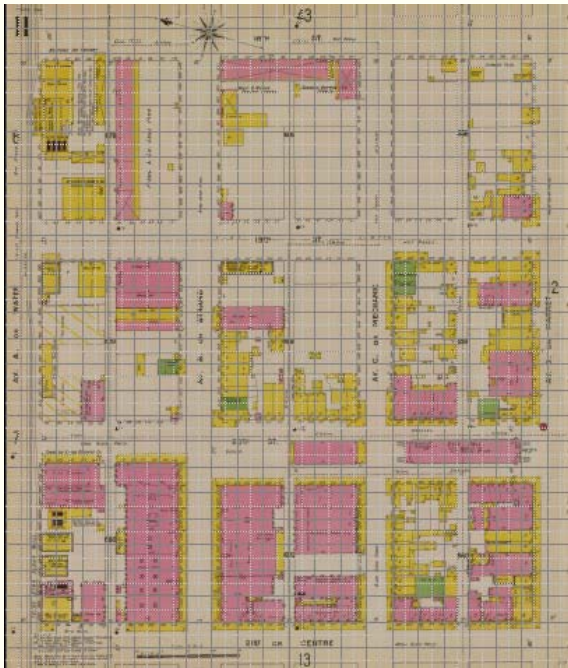
FIRE INSURANCE MAPS of Washington, D.C.:

City/County/Date	No. of Sheets	Comments
1227 Washington, D.C.		
1 1888 <i>AK</i>	84	Bound
1903-1916		
2 vol. 1, 1903 <i>Some sheets done</i>	129	Includes 6 skeleton maps. Includes key map to edition. Bound
A 3 vol. 2, 1904-1916 <i>Some sheets</i>	138	Includes key map to edition. Bound
4 vol. 3, 1916	93	Includes key map to edition. Includes Chevy Chase, Takoma Park, Maryland. Bound
1927-1928		
5 vol. 1, 1928	104	Includes zone map, map of congested district, and map of principal water supply mains. Includes key map to edition and 25 skeleton maps. Bound
6 vol. 2, 1928	78	Includes key map to edition and 6 skeleton maps. Bound
7 vol. 3, 1928	101	Includes key map to edition and 8 skeleton maps. Bound

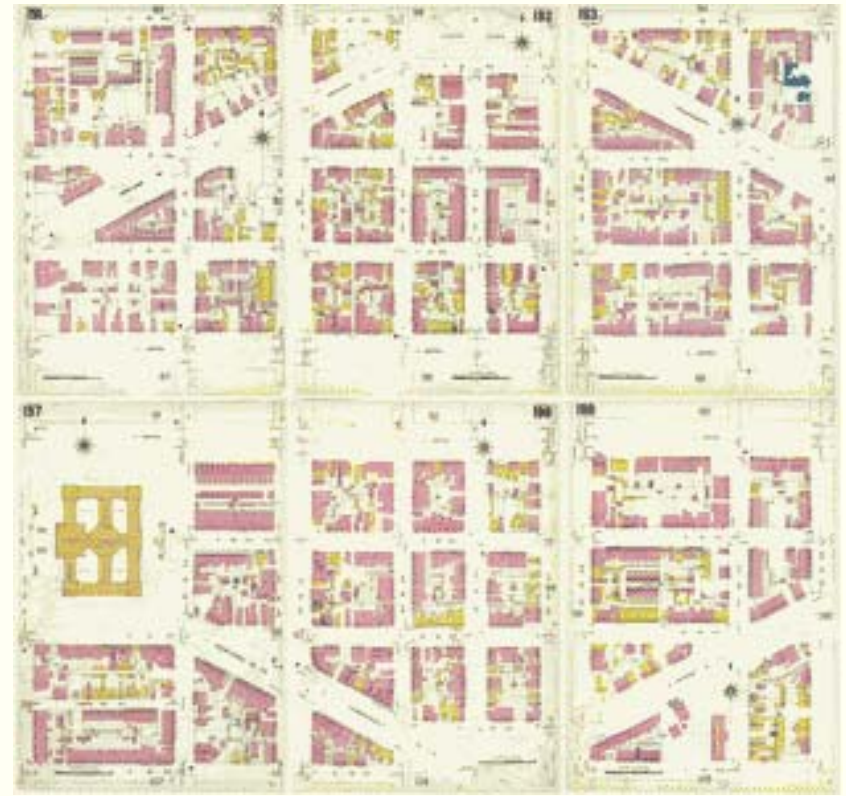
Page from *Fire Insurance Maps in the Library of Congress*

scann	project	aggregatenam	itemid	filename	dateofpub	datecreated	operatorid	equipmentid
1	On Demand Sc:	01227_002	01227	sb000070	1903	20020108	ga31	T5
1	On Demand Sc:	01227_002	01227	sb000080	1903	20020108	ga31	T5
1	On Demand Sc:	01227_002	01227	sb000170	1903	20020108	ga31	T5
1	On Demand Sc:	01227_002	01227	sb000210	1903	20020109	ga31	T5
1	On Demand Sc:	01227_002	01227	sb000370	1903	20020109	ga31	T5
1	On Demand Sc:	01227_002	01227	sb000490	1903	20020109	ga31	T5
1	On Demand Sc:	01227_002	01227	sb000830	1903	20020117	ga34	T5

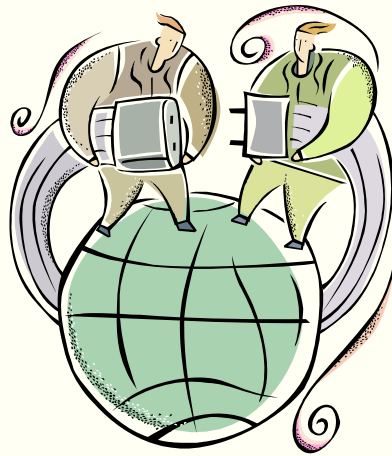
Administrative Metadata for Washington, DC



Georeferencing



Joining Sheets



Getting Maps to Users



Questions?
Questions?